



We are a MyMedicare Practice



If you are registered
with MyMedicare, see
your MyMedicare
general practice for
your chronic condition
management plan.

Do you have a Chronic Condition?

Your usual general practice
team can work with you
to support your chronic
condition care needs.

Regular check ups are a
great idea to keep your
condition well managed.



Scan the QR code to register
now or to find out more
information about MyMedicare

We are a
MyMedicare
Practice



SELECT



Introducing MyMedicare

With MyMedicare, you can now choose a general practice for ongoing care for your health and wellbeing needs.

MyMedicare helps your usual general practice build a stronger relationship with you to provide well-coordinated health care with you.



MyMedicare is
VOLUNTARY and
 you can change your
 registered general
 practice if you need to.

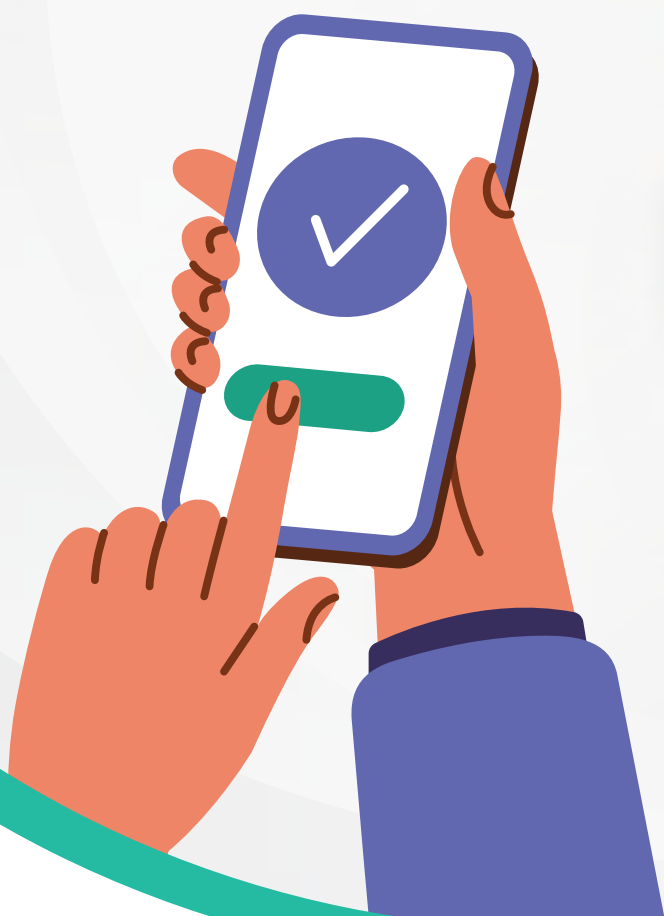


Scan the QR code
 to register now or
 to find out more
 information about
 MyMedicare

We are a

MyMedicare

Practice



Download the MyGov App on your phone or digital device.



Access your health information when you need it including registering for MyMedicare when you navigate to the Medicare tile in MyGov.

Don't forget to link Medicare to your MyGov account if you haven't already!

What can you do on the MyGov App?

- Access a digital copy of your Medicare Card
- Register for MyMedicare
- View your Medicare claims
- View your Immunisation history
- Register your newborn baby for Medicare
- Review your care plan history



Visit: my.gov.au